

JHP

Electrical

E-Brochure

Family, Positivity, Quality, Loyalty



CONTENTS

A. Overview

1. Introduction
2. Management Statement
3. Our Values

B. Case Studies

1. Leisure Centre LED Upgrade
2. Costco Wholesale UK Head Office
3. Arbroath FC
4. Berkhamstead School
5. Merton Saints BMX Track
6. Healthcare Projects
7. Ousedale School

A.

JHP OVERVIEW

INTRODUCTION

JHP has a family background of twenty-five years in the electrical Industry, and was taken to Limited Company status in 2005, by current directors, Jonathan Patterson and Helen Patterson. Focusing on commercial projects, JHP has established an enviable reputation for specialist knowledge when it comes to lighting installations. Clients range from sports clubs, schools and colleges, to major residential and commercial property developers as well as hospitals and clinics. Technical knowledge, workmanship, value for money and above all, customer satisfaction are the cornerstones on which the company is built.

CORE COMPETENCIES

- Office fit outs/Refurbishments
- School fit outs/Refurbishments
- Hospital fit outs/Refurbishments
- Sports Lighting
- LED Lighting Upgrades
- Energy Saving Projects
- Golf Driving Range Lighting Specialist

MAJOR CLIENTS

- Hillingdon Hospital NHS
- Stoke Mandeville Hospital NHS
- Mount Vernon Hospital NHS
- Park Federation Trust
- Top Golf UK Ltd
- Merchant Taylor's Preparatory School
- Parkwood Project Management
- Haberdashers' Aske's Girls' School

MANAGEMENT STATEMENT

Jonathan Patterson

Jonathan has been in the industry for over twenty years, and it's his vision and motivation that's driven the company forward to where it is today. His passion is utilising his accumulated and specialist lighting expertise to maximum effect, on a wide range of projects. He continues to expand the company's team of carefully screened, highly qualified professionals, as well as ensuring all inhouse apprentice training meets his exacting standards. The JHP ethos is that every job finishes on time and in budget, with the final criteria being client peace of mind.

Helen Patterson

Helen's area of expertise is people rather than plugs and she has a degree in Business Studies, an MA in Human Resource Management, and the experience of founding and running her own highly successful HR Consultancy. She's a firm believer, that the backbone of a business isn't only the skill of its technical team, but their commitment to both company and client, their satisfaction in a job well done, and the knowledge that each of them is a valued team member.

Company Information

Registered Address: Thames House, Bourne End Business Park,
Cores End Road, Bourne End. SL8 5AS

Tel: 0208 950 4643

enquiries@jhpelectrical.co.uk

www.jhpelectrical.co.uk

Company Number: 05542376

VAT Registration number: 875 6726 72

OUR VALUES

Family:

[fam-uh-lee, fam-lee] noun

Using our individual skills, we work together as an effective and efficient team.

Positivity:

[pos-i-tiv-i-ty] noun

We are open-minded to learning and growing.

Quality:

[kwa-la-ti] noun

We are always professional and carry out our work to the highest standards.

Loyalty:

[loy-al-ti] noun

We support our customers and each other.

B.
CASE STUDIES

Hengrove Park Leisure Centre

1

Project Case Study

Hengrove Park Leisure Centre



To achieve the desired objectives, JHP Electrical, the chosen contractor for the project, proposed a comprehensive LED lighting solution. All new LED luminaires provided by QVIS Lighting were selected to replace the existing outdated fixtures. The new LED lighting fixtures needed to be compatible with the existing control system on site and have the ability to reach different lux switching levels.

In addition to the luminaire upgrades, the project introduced additional daylight sensing controls in the lobby/cafe area. These controls allowed unnecessary luminaires to be switched off during bright hours, resulting in further energy savings.



49.6%
Energy reduction

£35k+
Annual cost savings

Achievements and Energy Saving:

The LED lighting upgrade at Hengrove Park Leisure Centre yielded significant results and benefits. Prior to the installation, the lighting system consumed approximately 271,313 kW, costing around £75,000 per year. **With the new LED lighting, the energy consumption reduced to approximately 134,795 kW, resulting in an annual saving of approximately £37,250.** This substantial cost reduction meant that the payback period for the LED lighting upgrade was approximately 2 and a half years.

Apart from the financial gains, the upgrade also led to improved lighting quality and enhanced user experience throughout the leisure centre. Visitors could enjoy a well-lit environment that not only met the required standards but also enhanced the overall aesthetics of the facility.

Furthermore, the LED lighting fixtures offered longer lifespans and reduced maintenance requirements compared to their predecessors. This resulted in additional cost savings for the leisure centre while ensuring reliable and sustainable lighting solutions.

Environmental impact was another notable benefit of the LED lighting upgrade. The significant reduction in energy consumption led to a substantial decrease in the leisure centre's carbon footprint and greenhouse gas emissions, contributing to a more sustainable operation.

"The engineers on site did a great job and worked extremely well together. The new LED lighting is a big improvement from what we had installed before."

HENGROVE PARK
LEISURE CENTRE

Martin - Onsite Maintenance Personnel

Costco Wholesale UK Head Office

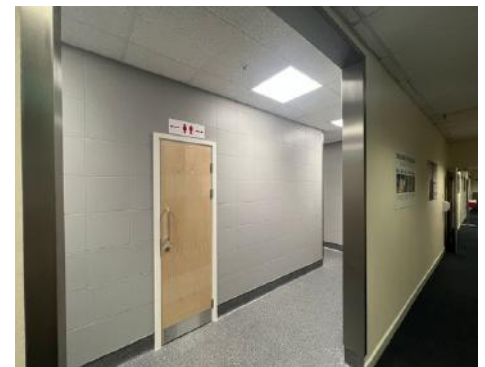
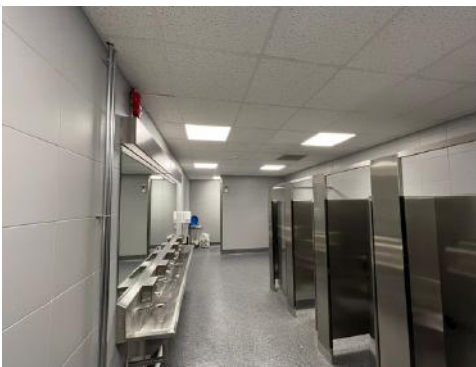
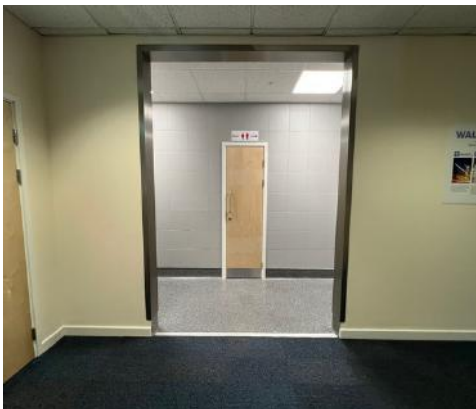
2

Project Case Study Costco Wholesale UK Head Office



JHP Electrical have been at Costco Wholesale UK Head Office in Watford to carry out a toilet refurbishment.

For this project, the JHP team has been upgrading the lighting in the bathroom of the store – helping to improve the quality of lighting for staff and customers alike.



Achievements and services provided:

Project Objectives:

The primary objectives of the project were to improve the toilet facilities for staff at the Costco head office and achieve a more modern finish. Recognizing the importance of creating a comfortable and contemporary working environment, the refurbishment aimed to align the facilities with Costco's commitment to excellence.

Scope of Works:

The refurbishment project targeted two staff toilets over two phases. The scope of works included the installation of new LED lighting through 600x600 panels, the introduction of modern hand dryers with associated wiring back to the distribution board, and the addition of mirror lighting. These elements were carefully selected to enhance both functionality and aesthetics.

Timeline & Budget:

Each phase of the project was meticulously programmed over 8 weeks, with dependencies on the electrical elements of works. Thanks to efficient planning and execution, the electrical components were delivered on time, ensuring that the entire project stayed within the allotted time frame and budget.

Stakeholders:

Throughout the project, communication with stakeholders was a top priority. Relevant parties were consistently informed of timelines and attendances. Additionally, the project welcomed design changes, and an effective change management process ensured that these modifications did not disrupt the overall program.

Challenges and Solutions:

While various design changes were implemented during the construction phase, the robust change management process mitigated any potential challenges, ensuring a smooth progression of the project. This adaptability underscored the project's flexibility and responsiveness to evolving requirements.

Outcomes:

The successful completion of the electrical refurbishment left the client and staff with modern, well-illuminated toilets. The introduction of LED lighting not only enhanced visibility but also contributed to a more sustainable and energy-efficient workspace.

"Very happy with the service provided by Charlie and his team at JHP Electrical. Every engineer supplied to us was professional, punctual, very knowledgeable and always left the work area clean and tidy. I look forward to working with JHP Electrical on more projects in the future!"

Steve Shirley - Installation Foreman/ Site Manager
Scobie Projects Ltd.

Arbroath FC

3

Project Case Study

Arbroath FC - Gayfield Park



Our team have been working hard across the border in Scotland!

We have recently completed a floodlight upgrade for Scottish Championship side, Arbroath FC. As you can see, our team had to hit the heights to work on the ground's floodlights – and we're delighted to announce that all works were completed as planned.



50%
Energy reduction

£6k+
Annual cost savings

Achievements and services provided:

- JHP installed 42 MS fittings to existing columns adjusting/angling to suit the provided design and fixing pest control to each fitting for added protection.
-
- Weather conditions were a big factor on this job as working at such a height on the coast can present a big risk. This was managed following all Health and Safety regulations and the project was completed smoothly.
- New enclosure boxes were installed to the base of the masts to ensure longevity to the control gear for the newly installed fittings, this is a must when you don't have the option to mount the drivers into the base of the masts!
- Once the install was complete Electrical testing was complete in accordance to BS 7671:2018 and a NICEIC digital minor works certificate was provided for all relevant works.
- Once the lights had been installed and all was in working order, JHP returned back to Arbroath to carry out a lux level report, this provided the club with a certification that the lux levels were being achieved. This is a MUST for any new LED install.
- Working in collaboration with Midstream Lighting.
-



"I would like to thank Charlie Tierney and the installation team of Neil Dimon and Lucy Stevens at JHP Electrical for their hard work and dedication working around the clock in sometimes testing windy weather conditions to install and commission the lights between our last two home matches at Gayfield."



Arbroath FC Chairman - Mike Caird

Berkhamstead School

4



BERKHAMSTED
— 1541 —

Project Overview:

Embarking on a transformative journey, Berkhamsted School initiated a project to convert its existing staff room into an innovative Food Tech Class Room. The objective was to meet the rising demand for enhanced teaching spaces, prioritizing a contemporary, top-tier learning environment.

Background:

In response to the evolving needs of its educational programs, Berkhamsted School launched a project to expand and elevate its Food Tech facilities.

Project Objectives:

The primary aim of the project was to deliver a state-of-the-art space for food technology education, setting the stage for an enriched learning experience for both educators and students.



Project Timeline:

Operating within a tight schedule, the project unfolded during the summer holidays, with a targeted completion date of September 1st, 2023. This ensured the readiness of the new Food Tech Class Room for the upcoming academic year.

Scope of Work:

JHP Electrical took on an extensive array of tasks, including revamping the electrical intake cupboard, introducing a new MCCB panel board, implementing fresh electrical submain cables, and installing a three-phase distribution board for the Food Tech Room. Additionally, a temporary distribution board and standby generator were deployed to address delays in the electrical infrastructure upgrade from UK Power Network. The project also encompassed a comprehensive installation of LED lighting and small power systems.

Challenges and Solutions:

A significant hurdle emerged with the heightened electrical demand resulting from the conversion of the staff room into a Food Tech space. Faced with a prolonged lead time for an electrical infrastructure upgrade from UK Power Network, JHP Electrical devised an ingenious solution – a standby generator exclusively supplying the cooker circuits. This strategic move effectively met the escalated electrical demand.

Results and Achievements:

The project's completion yielded a high-caliber Food Tech space fully compliant with electrical regulations, providing an optimal learning environment for both teachers and students.

Conclusion:

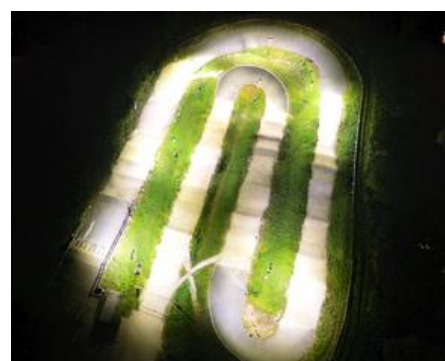
For schools or contractors embarking on educational renovations, JHP Electrical stands as a steadfast partner for top-notch installations. Contact us now to ensure your projects benefit from our expertise, innovation, and unwavering commitment to excellence.

Merton Saints BMX Track

5



At Merton Saints BMX Track, the thrill of racing is matched only by the club's dedication to innovation. This case study dives into their recent transition to LED floodlights, illuminating the motivations behind the project and the positive changes it has brought to this vibrant racing community. With the installation of advanced LED floodlights, Merton Saints BMX Track has not only elevated safety and visibility but has also taken a significant step towards environmental responsibility and cost efficiency.



Achievements and services provided:

- JHP Removed 20 old Metal Halide fittings and disposed of following environmental guidelines.
- JHP installed 20 new Midstream Lighting fittings to existing positions.
- Existing brackets were adjusted to fit the new style of floodlights.
- Once the install was complete Electrical testing was complete in accordance to BS 7671:2018 and a NICEIC digital minor works certificate was provided for all relevant works.
- Working in collaboration Midstream Lighting.



"We would like to thank you for the excellent work that your team has done for us as well as your communication and advice. It has been really appreciated. Huge appreciation for our awesome lights."



**David Radcliffe -Vice Chairman
Merton Saints BMX Club**

Health Care Projects

6

JHP

Electrical

Milton Keynes
Hospital
University Hospital
NHS Foundation Trust

Welcome to
**Milton Keynes
Hospital**

Health Care Case Study



Over the past 3 years, here at JHP Electrical we have undertaken several refurbishment projects within the healthcare section within hospitals, clinics, and care homes, over a total of £600,000 in electrical works alone. Not only were these projects undertaken through sub-contracting to a main contractor, but also working directly for the NHS trust carrying out lighting upgrades and annual testing. The list of hospitals where we have carried out major works are as follows.

- Stoke Mandeville Hospital
- Mount Vernon Hospital
- Hillingdon Hospital
- Buckingham Community Hospital
- Wycombe General Hospital
- Milton Keynes Hospital
- Peace Children's Centre, Hertfordshire Community NHS Trust
- Queen Victoria Memorial Hospital
- Goodmayes Hospital

During the COVID-19 lockdowns we were given a key worker status which allowed us to work on vital projects such as the A&E Department, Covid Resilience which included the construction and refurbishment of a new ward with 3 new covid resilient triage bays, a mental health room complete with an emergency power off button and anti-ligature fixtures, accessible WC, reception, security room and mechanical supplies for an HVAC system

Back in 2019 – 2020 JHP Electrical were involved within a project, turning an office suite into a state-of-the-art therapy facility for patients with severe spinal injuries at the world renowned National Spinal Injuries Centre at Stoke Mandeville Hospital. The Upper Limb Studios would be one of the first projects of its kind in the UK and was inspired by the writings of the actor Christopher Reeve. Works were carefully coordinated, and much time was spent surveying and working out the best services routes and services connections which had to be agreed and augmented by the NHS Estates Management team.

The outcome was a stunning new facility which included new mechanical ventilation, air conditioning, heating, and full electrical services. The Studios are fully equipped with interactive ceiling mounted audio-visual screens, alternating colored LED lighting around acoustic ceiling circles.

The project didn't come without its complications. The proposed LED lighting around acoustic ceiling circle came with a long lead which would have put the project out of program and came with a heavy price tag. JHP Electrical had to undertake some valuable engineering on the project. This required market research and liaising with various suppliers to find a suitable product. With some hard work and determination, a suitable product was sourced which brought the project in within time and with a cost saving to our client.



Ousedae School

7



Background Information:

Ousedale School, situated at the picturesque Olney Campus, recently underwent a transformative lighting upgrade project. The school's existing lighting infrastructure, comprising outdated fluorescents and large hanging lights, was not only failing but also contributing to soaring energy costs. Motivated by a commitment to reduce their carbon footprint and enhance lighting quality, the school embarked on a journey towards modernization.

Project Overview:

The urgency of the lighting upgrade became apparent as the old system was on the brink of failure, leaving spaces inadequately lit during crucial hours. Combined with the escalating energy prices, this became the impetus for a comprehensive lighting overhaul.

Objectives:

The primary goal was twofold: to significantly reduce energy consumption while meeting the stringent lux level requirements set by Sports England for the sports hall. Simultaneously, the main hall aimed for an improvement in lighting quality.

Technical Requirements:

To achieve these objectives, a cutting-edge LED lighting solution was implemented, featuring LED panels and high bay fixtures. Existing controls in the sports hall were utilized, while "switch dim" controls were introduced in the main hall for user flexibility. Meeting the Sports England guideline of 500 lux in the sports hall was imperative, ensuring a top-notch facility for sporting activities.



Energy Efficiency:

The results were remarkable, with a 71% reduction in energy consumption for the main hall and a 59% reduction for the sports hall. Over three years, this translates to approximately £20,000 in savings – a testament to both environmental responsibility and fiscal prudence.

Installation Process:

The installation process was executed with precision, utilizing a push-around vertical machine to safeguard the sprung floor in the sports hall. The project was completed within an impressive one-week timeframe during the October half-term, minimizing disruption to normal school activities.

Challenges and Solutions:

Selecting a height access machine without damaging the sprung floor posed a challenge, met with an innovative solution – a push-around vertical machine equipped with heavy-duty mats. This lightweight yet robust choice ensured a seamless installation process, reaching a height of 9.5 meters.



Post-Implementation Results & User Feedback:

Users of the sports hall, particularly night-time clubs, have marveled at the improvement in lighting quality. Mark Kettleborough, the senior caretaker, expressed his amazement at the transformation in the main hall, commending the project's efficiency and the team at JHP.

Mark's Testimonial: "The impact of the new lighting is unbelievable. We should have done this sooner! The team at JHP did a superb job, completing the upgrades within the tight timeframe. I would definitely recommend JHP to others and look forward to working with them again."